



hello
SEPTEMBER



WELCOME BACK DANCERS!

We are so excited to be back to start Season 17!
This summer was amazing, filled with new classes, new friends,
new camps and clinics!

Our 2025/2026 season kicks off on Tuesday, September 2nd
Classes are starting to fill up quickly, so be sure to secure your
spots now! If you are already enrolled, please be sure to
review your class schedule and dress codes to ensure that
you have a smooth start!

We are committed to creating a community where everyone
thrives. We are so excited to see each dancer challenge
themselves, overcome hurdles and grow beyond their
expectations!

As always, we are here to answer any questions you may have
about the upcoming season. Please email us at
encoredanceacademyde@gmail.com

Thank you all for your continued support and being a part of
our Encore Family!



Updates and Deadlines

Sept 2nd - Back to Dance!

Sept 29th - Oct 4th - Bring a Friend Week

Oct. 4th - Winter Wonderland Sign-Ups Close

Oct 13th - Oct 18th - Recital Information Meetings

[Click Here for the Full Encore Calendar](#)



Bring a Friend Week

BRING A FRIEND TO DANCE CLASS!

MONDAY, SEPTEMBER 29TH THROUGH SAURDAY, OCTOBER 4TH

WE INVITE ALL OUR STUDENTS TO SHARE THEIR LOVE AND PASSION
FOR DANCE DURING OUR ANNUAL "BRING A FRIEND TO DANCE"
WEEK!

DANCERS ARE WELCOME TO BRING THEIR FRIENDS TO JOIN THEM AT
ANY OR ALL OF THEIR DANCE CLASSES DURING THE WEEK,
COMPLETELY FREE!

CURRENT STUDENTS ARE ALLOWED TO BRING ANY FRIEND TO ANY
DANCE CLASS WITH THE EXCEPTION OF THE FOLLOWING:

ELITE ENSEMBLE
ELITE COMPETITION



winter wonderland show

Registration is now OPEN!

[Sign up HERE](#)

Don't miss your chance to be a
part of a magical weekend!

**SANTA
VENDORS
BAZAAR
BAKE SALE
GAMES
AMAZING SHOW**





Tuition

Tuition is due by the 8th of the month.
Autopayment is highly recommended.
Payments can be made right in your portal!

What Do I Wear?

Dancers should wear dance clothes to dance class, and have the correct shoes.
Please see this link for more information!

[What Should I Wear?](#)

Can I Switch My Class?

Of course you can! Before adding a different class, email us at encoredanceacademyde@gmail.com with what you want to switch to, and we will take care of it on our end! Doing this ensures that your dancer is enrolled in the correct class and that the account stays accurate!



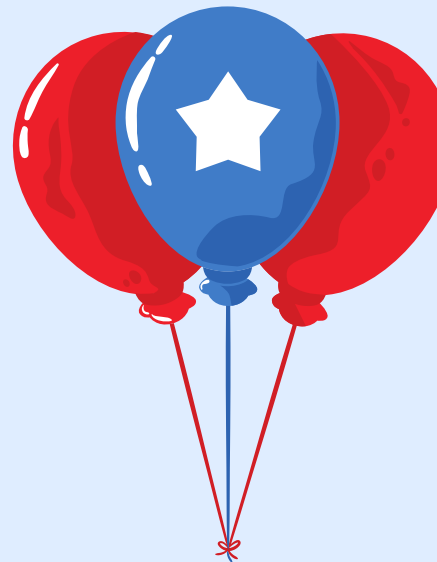
Happy Birthday JULY



Victoria A.
Hayden B.
Madison B.
Eliza C.
Eleanor C.
Mia C.
Arianna C.
Myiah D
Rosalie F.
Isabella G.
Kendra G.
Penny G.
Ava H.
Juliette K.
Leilani K.
Breana L.
Harper L.
Amora M.
Ellie M

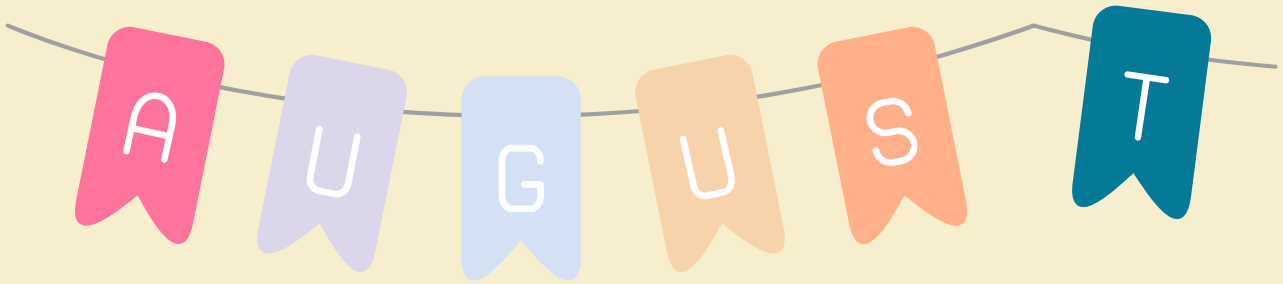
Jordyn M.
Kinsley M.
Lilyanna N.
Olivia N.
Carson P.
Angelina R.
Lilliana R.
Charleigh S.
Kinsley S.
Riley S.
Sophie S.
Olivia T.
Paisleigh V.
Tatum V.
Aracellys W.
Gracie W.
Anna W.

Ms. Lauren
Ms. Kayla M.
Ms. Kelsey
Ms. Terri





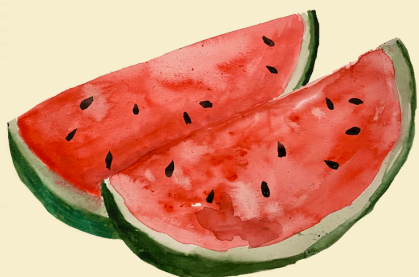
Happy Birthday



Anza B.
Kennedy B.
Laicee B.
Sydney B.
Aliyah C.
Joella C.
Audrianna D.
Lucy E.
Airiella F.
Ash F.
Mckenzi F.
Raquel F.
Sarai F.
Kyla G.
Gabrielle H.
Alanna J.
Lucy K.
Taelyn L.
JoJo L.
Ava L.
Rosie M.
Tanner M.

Henley N.
Naylani P.
Spencer P.
Rori R.
Lilyanah R.
Kaylin M.
Julia R.
Amelia S.
Delaney S.
Lucy S.
Rosalyn S.
Yazlynn S.
Annabelle T.
Meadhbh T.
Peyton T.
Logan T.
Amara U.
Gemma V.
Olivia W.
Olivia W.
Harper Y

Ms. Sarah





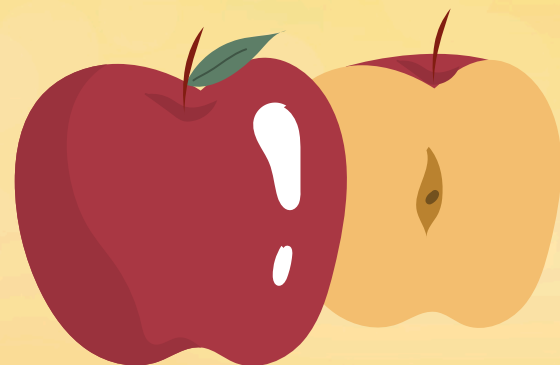
Happy Birthday

September

Adalyn A.
De'Ana A.
Sahvon B.
Marjori C
Aliya C.
Zoey C.
Alanna D.
Brooklyn F.
Destini G.
Paisleigh H.
Jade H.
Nadia H.
Adalyn H.
Paden J.
MaKenna L
Raelynn L.
Camila L

Ryan L.
Emma L.
Autumn M.
Eleanor M.
Abigail M.
Dylan M.
Emma M
Drew M
Ariella R.
Lily R.
Zoe R.
Pearl S.
Teagan S.
Avah V.
Makayla W.
Danielle W.

Ms. Donna
Ms. Jaden
Miss Jenn
Ms. Zoe





2025/2026 Important Dates.

September 2nd - First Day of Classes

September 29th - October 4th - Bring a Friend Week

October 4th - Last Day of Winter Wonderland Registration

October 13th - October 18th - Recital Information Meetings

October 25th - Trunk or Treat (Bear Parking Lot)

October 31st - Closed for Halloween

November 24th - November 29th - Closed for Thanksgiving

December 7th - Winter Wonderland Show

December 8th - December 13th - Costume Measurement Week

December 15th - December 20th - Party Week

December 22nd - January 3rd - Closed for Winter Break

January 5th - Studio Reopens

January 12th - January 17th - Bring your Daddy (special adult) to Dance

February 16th - Closed, Presidents Day

March 30th - April 4th - Recital Meetings (Important)

April 6th - April 11th - Studio Closed for Spring Break

April 20th - Recital Ticket Sales Begin

May 2nd - Last Day to Pre-Order Recital Merchandise

May 22nd - May 25th - Studio Closed Memorial Day

June 1st - June 6th - In Studio Dress Rehearsal

June 9th - June 14th - Recital Week